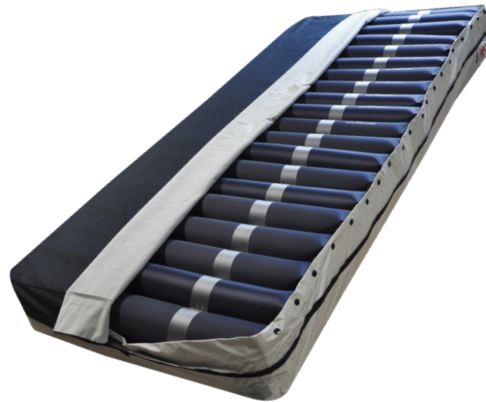


NAUSIFLOW 834 MATTRESS

Recommended for pressure sore stages 3 and 4



CAUTION: In dynamic mode, no discharge in the sacral zone



The NAUSIFLOW 834 is an all-air mattress with a total height of 20 cm. It is composed of 20 independent, disconnectable cell-on-cell cells: 10 cm of active air + 10 cm of confined air ensuring relative safety in the event of damage to the upper cell. Its 4 cells located in the heel zone are equipped with a quick connector for localized discharge, while leaving the mattress operational by fitting a plug.

It is covered by a fully-zipped cover made of PU-coated bielastic jersey, waterproof and breathable, treated with silver ions (Ag+) for antibacterial and antifungal properties.

It is M1 fire-resistant and machine-washable up to 95°C.

Available in widths of 85 and 120 cm, and compatible with 100 AUTO QUATTRO and 100 MAXI pump.



3 valves air supply.

PREVENTIVE MAINTENANCE TRAINING

Nausicaa Médical trains you in the care and maintenance of our products to improve their durability and enable you to maximize your return on investment.

i

The first step in preventing bed sores is to change the body's support points every three hours on average, in order to limit prolonged compression of the vessels opposite bone protrusions, and thus enable better irrigation of the various tissues.

Nausicaa Médical offers a wide range of therapeutic supports, the result of years of experience in the field and listening to healthcare professionals.

The aim of our range is to provide a lying surface suitable for people who are bedridden for long periods, and who have little or no mobility. Our devices can be adapted to most bed widths, and are selected according to the patient's condition, morphology, weight and the number of hours spent in bed.



WARRANTY 2 YEARS



REFERENCES

NA834-MAT85-PM
NA834NPU-MAT120